

# GanttProject Report

Project : QA: Environmental Scan and Best Practices

Start : 4/9/08

End : 7/3/08

Organization : IAAAA Quality Assurance Committee

Web Link :

Description : Conduct an environmental scan to identify best practices among the AAAs and to learn the Division of Aging QA requirements.

Date : Apr 9, 2008 2:26:30 PM

## Tasks List

| Name  | Begin date | End date | Resources   |
|---|------------|----------|---|
| Create workplan<br>Entire committee is responsible for completion of task.                                  | 4/9/08     | 6/6/08   | Quality Assurance<br>Committee<br>Gloria Wetnight   |
| Submit Workplan to Board for approval   | 6/6/08     | 6/7/08   | Jennifer Malone<br>Gloria Wetnight<br>Emily Larimer |
| Conduct environmental scan of AAA best practices<br>Entire committee is responsible for completion of task. | 6/16/08    | 7/3/08   | Quality Assurance<br>Committee<br>Gloria Wetnight   |
| Discover DA QA requirements<br>Entire committee is responsible for completion of task.                      | 6/16/08    | 7/3/08   | Quality Assurance<br>Committee<br>Gloria Wetnight   |

## Resources List

| Name                        | Default role                | e-mail                   | Phone              | Assignment role |
|-----------------------------|-----------------------------|--------------------------|--------------------|-----------------|
| Quality Assurance Committee | undefined                   |                          |                    |                 |
| Gloria Wetnight             | Quality Assurance Committee | glwetnight@netscape.net  | 1-800-489-1561 ext |                 |
|                             | Chair                       |                          | #240               |                 |
| Jennifer Malone             | Quality Assurance Committee | jmalone@nwi-ca.org       | 219-937-3500       |                 |
|                             | Board Liaison               |                          |                    |                 |
| Anne Willstead              | Quality Assurance Committee |                          |                    |                 |
|                             | Member                      |                          |                    |                 |
| Jen Wozniak                 | Quality Assurance Committee |                          |                    |                 |
|                             | Member                      |                          |                    |                 |
| Beth Krudop                 | Quality Assurance Committee |                          |                    |                 |
|                             | Member                      |                          |                    |                 |
| Justine Currie              | Quality Assurance Committee | jcurrie@areaivagency.org | 765-447-7683       |                 |
|                             | Member                      |                          |                    |                 |
| Cindy Wagoner               | Quality Assurance Committee | Cindy@areafive.com       | 574-722-4451       |                 |
|                             | Member                      |                          |                    |                 |

|                 |                             |                             |                |
|-----------------|-----------------------------|-----------------------------|----------------|
| Jim Allbaugh    | Quality Assurance Committee | JAllbaugh@LifeStreaminc.org | (765) 759-1121 |
|                 | Member                      |                             |                |
| Doug May        | Quality Assurance Committee | dmay@cicoa.org              | (317) 803-6012 |
|                 | Member                      |                             |                |
| Kathy Bridgford | Quality Assurance Committee | kbridgfo@indiana.edu        | (765) 966-1795 |
|                 | Member                      |                             |                |
| Terry Jackson   | Quality Assurance Committee |                             |                |
|                 | Member                      |                             |                |
| Brenda Thayer   | Quality Assurance Committee |                             |                |
|                 | Member                      |                             |                |
| Laura Holscher  | Quality Assurance Committee | LHolscher@vinu.edu          | 812-888-5155   |
|                 | Member                      |                             |                |
| Vickie Medlock  | Quality Assurance Committee | vmedlock@lsr14.org          | 812-948-8330   |
|                 | Member                      |                             |                |
| Trudy Wells     | Quality Assurance Committee | tkwells@hoosieruplands.org  | 812-849-4457   |
|                 | Member                      |                             |                |
| John Graves     | Quality Assurance Committee |                             |                |
|                 | Member                      |                             |                |

---

Emily Larimer

Project Manager/IAAAA

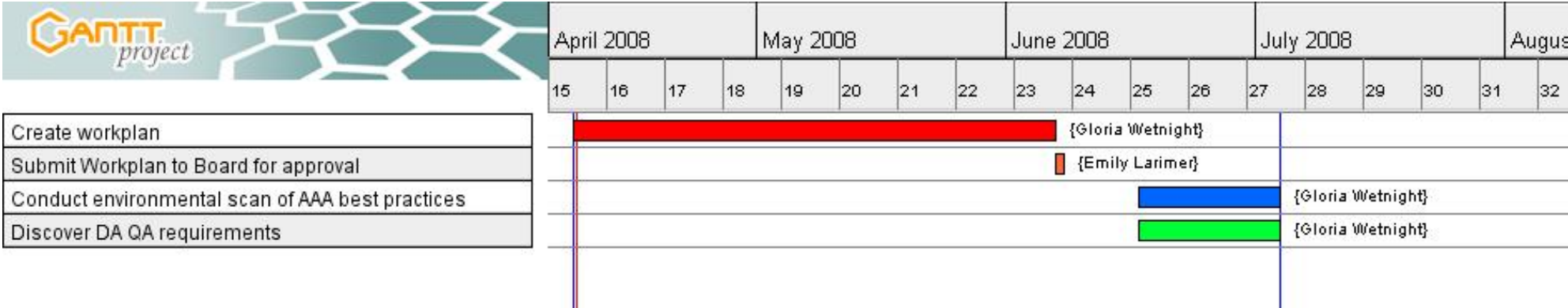
elarimer@iaaaa.org

317-818-0702

Contact

---

# Gantt Chart



# Resources Chart

|                             | April 2008               |    |    |    | May 2008 |    |    |    | June 2008 |                    |    |    | July 2008 |    |
|-----------------------------|--------------------------|----|----|----|----------|----|----|----|-----------|--------------------|----|----|-----------|----|
|                             | 15                       | 16 | 17 | 18 | 19       | 20 | 21 | 22 | 23        | 24                 | 25 | 26 | 27        | 28 |
| Quality Assurance Committee | [Blue bar from 15 to 22] |    |    |    |          |    |    |    |           | [Yellow box: 200%] |    |    |           |    |
| Gloria Wetnight             | [Blue bar from 15 to 22] |    |    |    |          |    |    |    |           | [Yellow box: 200%] |    |    |           |    |
| Jennifer Malone             |                          |    |    |    |          |    |    |    |           | [Blue bar: 23]     |    |    |           |    |
| Anne Willstead              |                          |    |    |    |          |    |    |    |           |                    |    |    |           |    |
| Jen Wozniak                 |                          |    |    |    |          |    |    |    |           |                    |    |    |           |    |
| Beth Krudop                 |                          |    |    |    |          |    |    |    |           |                    |    |    |           |    |
| Justine Currie              |                          |    |    |    |          |    |    |    |           |                    |    |    |           |    |
| Cindy Wagoner               |                          |    |    |    |          |    |    |    |           |                    |    |    |           |    |
| Jim Allbaugh                |                          |    |    |    |          |    |    |    |           |                    |    |    |           |    |
| Doug May                    |                          |    |    |    |          |    |    |    |           |                    |    |    |           |    |
| Kathy Bridgford             |                          |    |    |    |          |    |    |    |           |                    |    |    |           |    |
| Terry Jackson               |                          |    |    |    |          |    |    |    |           |                    |    |    |           |    |
| Brenda Thayer               |                          |    |    |    |          |    |    |    |           |                    |    |    |           |    |
| Laura Holscher              |                          |    |    |    |          |    |    |    |           |                    |    |    |           |    |
| Vickie Medlock              |                          |    |    |    |          |    |    |    |           |                    |    |    |           |    |
| Trudy Wells                 |                          |    |    |    |          |    |    |    |           |                    |    |    |           |    |
| John Graves                 |                          |    |    |    |          |    |    |    |           |                    |    |    |           |    |
| Emily Larimer               |                          |    |    |    |          |    |    |    |           | [Blue bar: 23]     |    |    |           |    |